



Amedeo Modigliani

Amedeo Modigliani

Born in Italy in 1884

Poor Health his entire life

Moved to Paris where he was well respected –
for about a year.

Began hanging out in the “wrong” parts of town

Figure artist---painted the human figure

Was an Avante Garde Artist ---Modern artist

Died in 1920

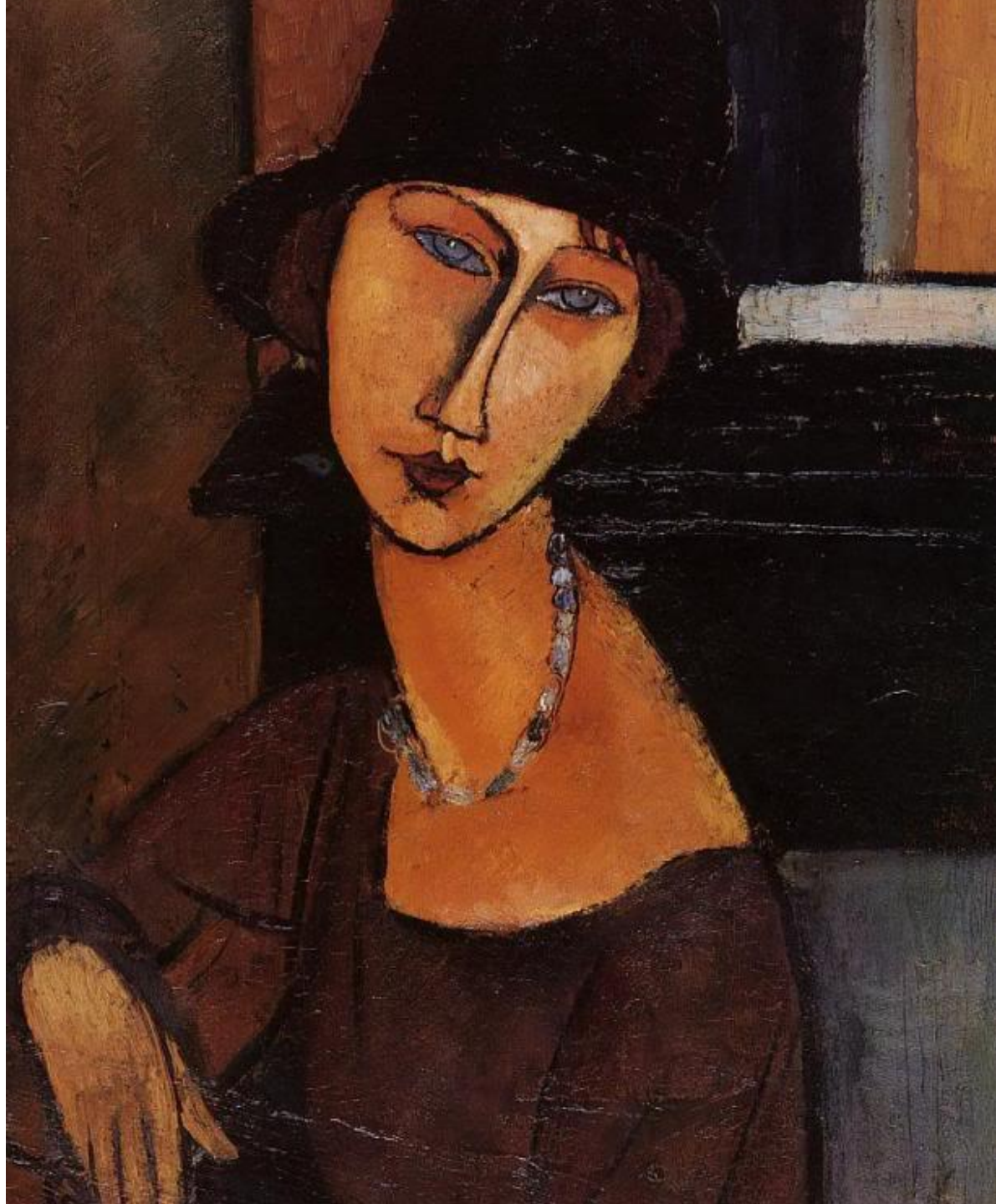


Amedeo Modigliani









Characteristics of Modigliani Portraits

- Long and narrow faces and necks.
- Facial features are not in proportion.
- Value changes Hair is much darker than facial complexion.
- Only see top part of body
- Long narrow nose.
- Small mouth...Too low
- Sad/melancholy look on face
- Dark outlines on all parts of face.
- Neatness
- Effective Use of Class time