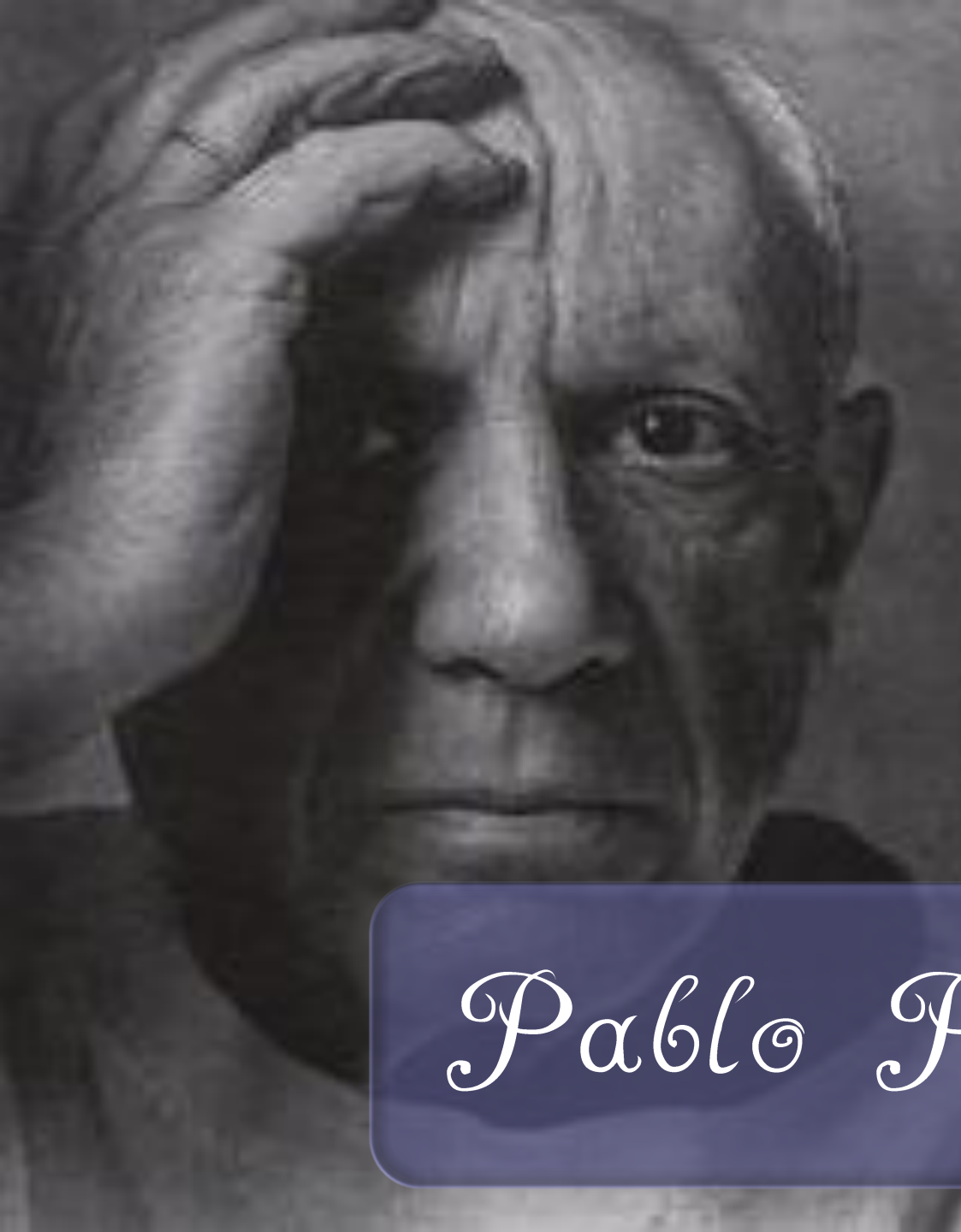






*Girl with The Pony Tail*

*A Story about  
Pablo Picasso*



*Pablo Picasso*

# Pablo Picasso

Born in Spain in 1881.

Son of an art teacher.

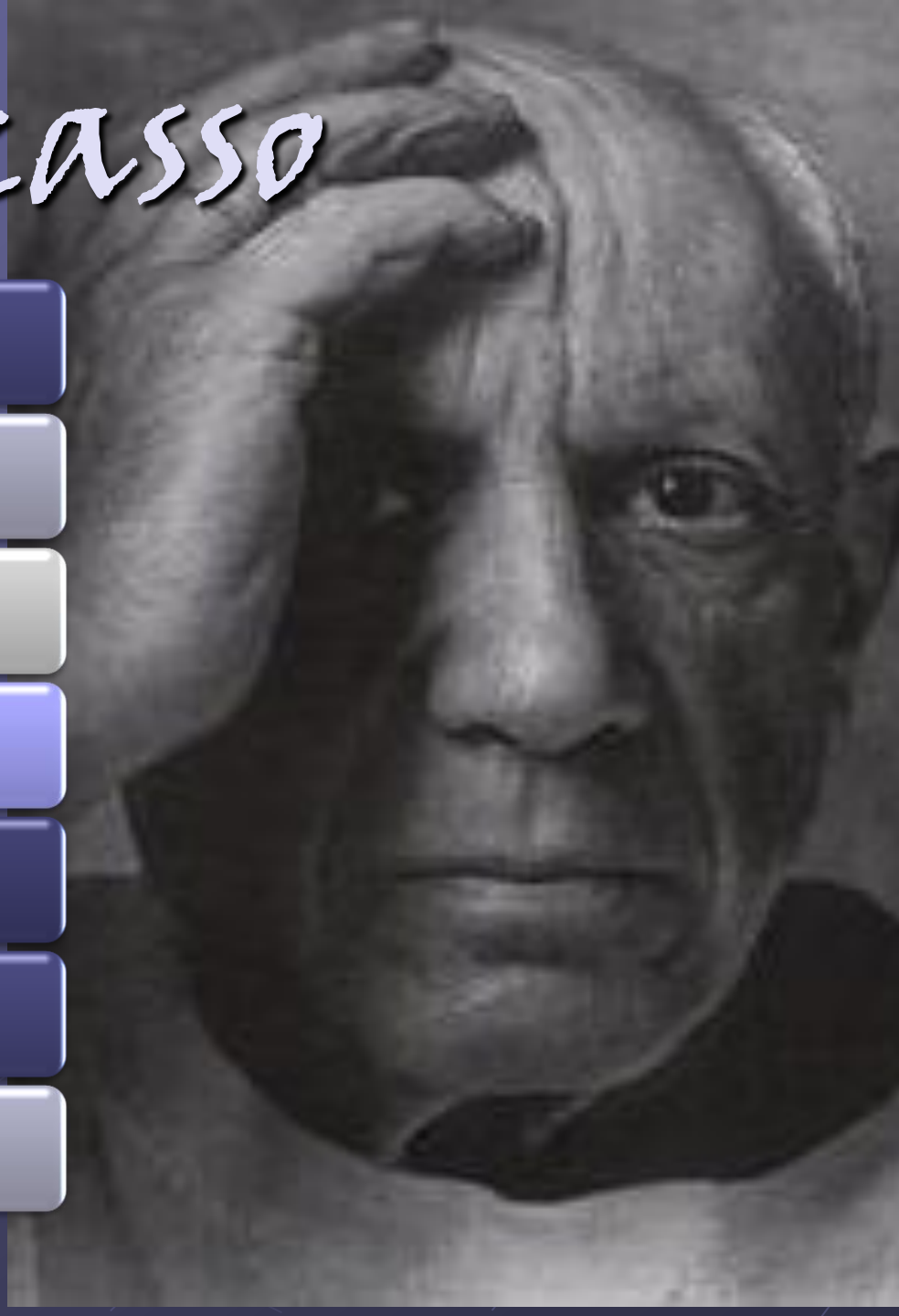
He could draw before he could speak.

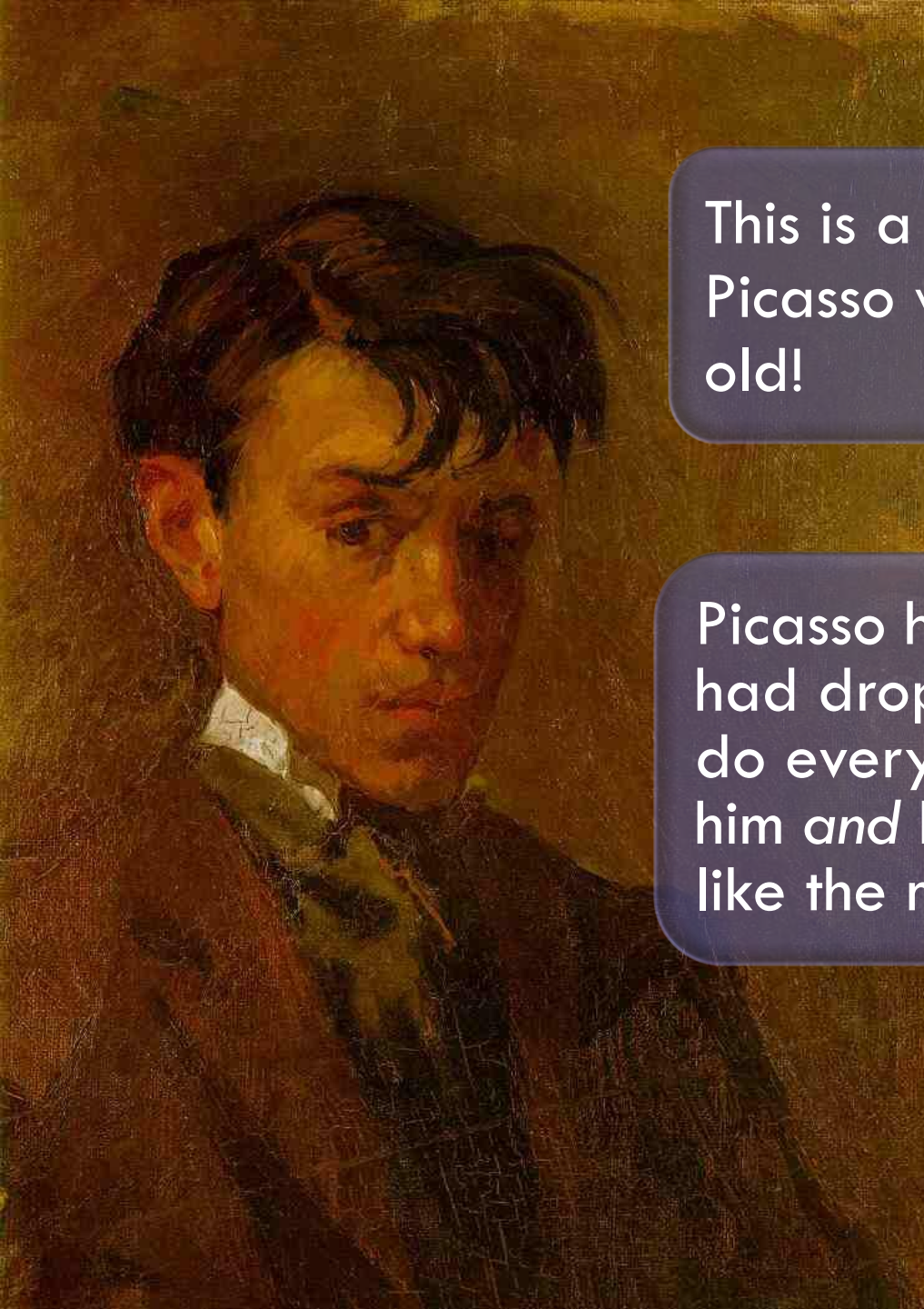
He became bored with painting like the masters.

He started to paint more bravely.

He co-invented Cubism with artist Georges Braque.

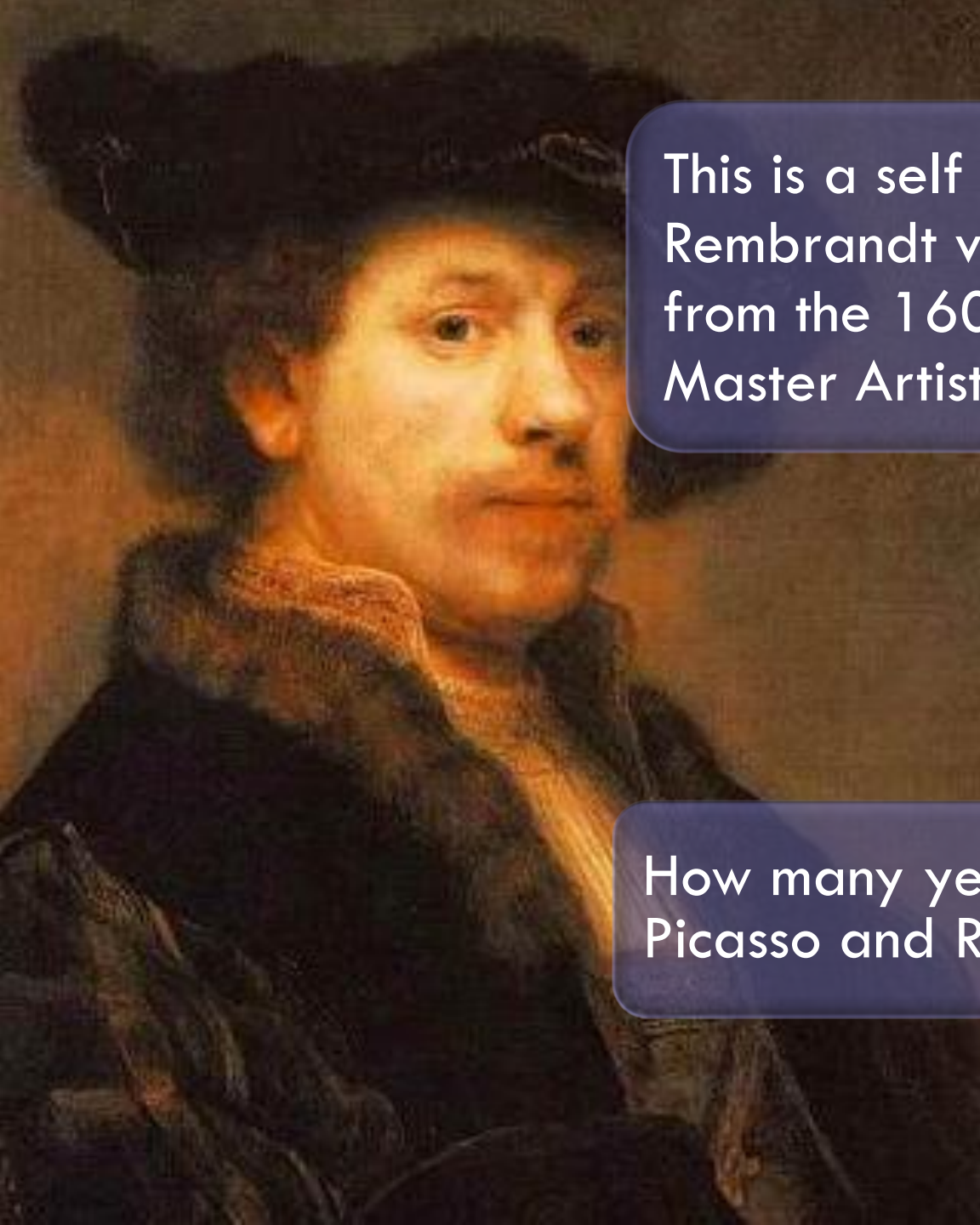
Pablo Picasso died in 1973.





This is a self portrait painted by Picasso when he was sixteen years old!

Picasso had gone to art school, but had dropped out because he could do everything they were teaching him *and* he grew bored with painting like the master artist works.



This is a self portrait painted by Rembrandt van Rijn. A Dutch artist from the 1600's. Rembrandt was a Master Artist.

How many years separate Pablo Picasso and Rembrandt?

# Compare and Contrast



Similarities

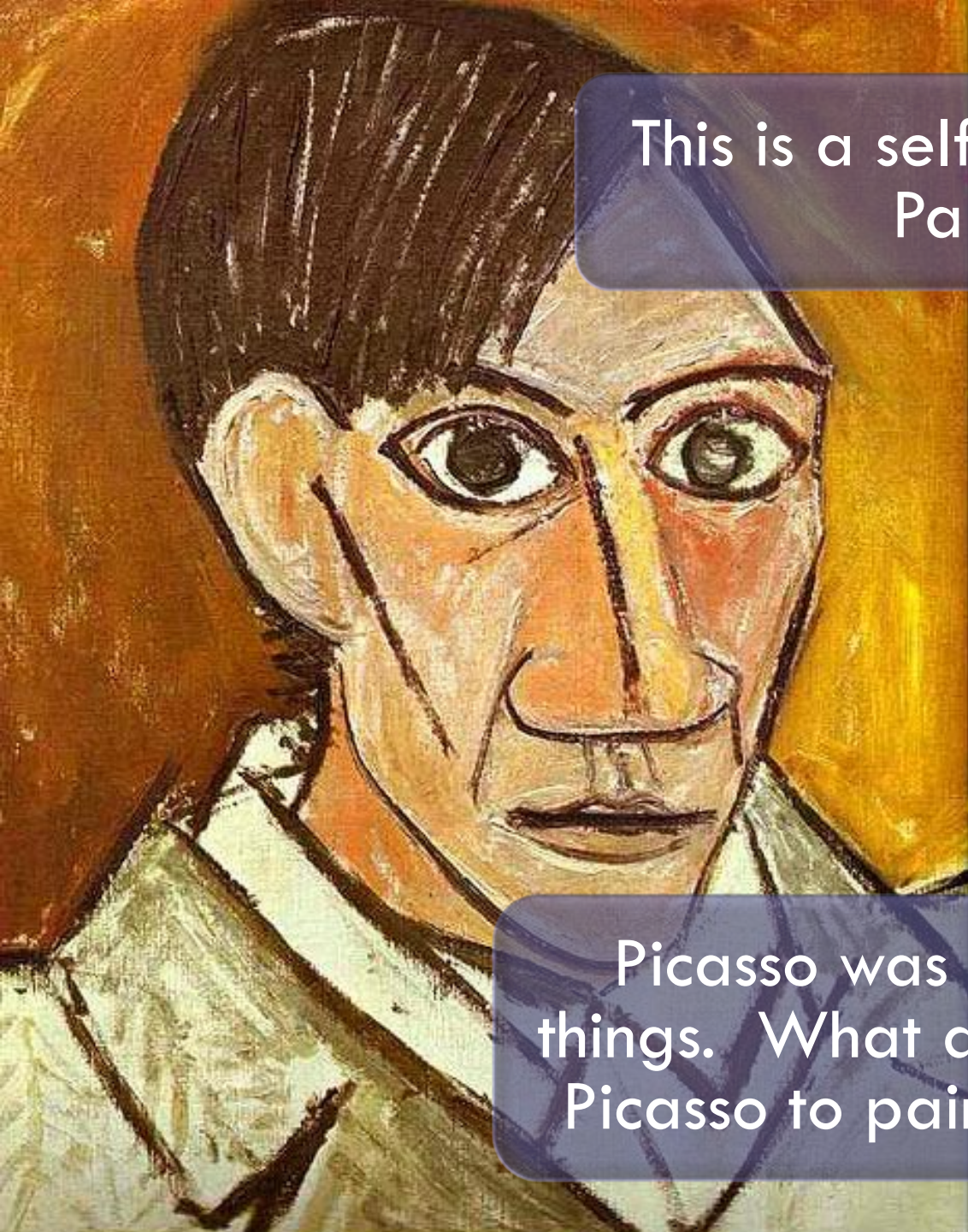


Differences





# *Self Portrait*

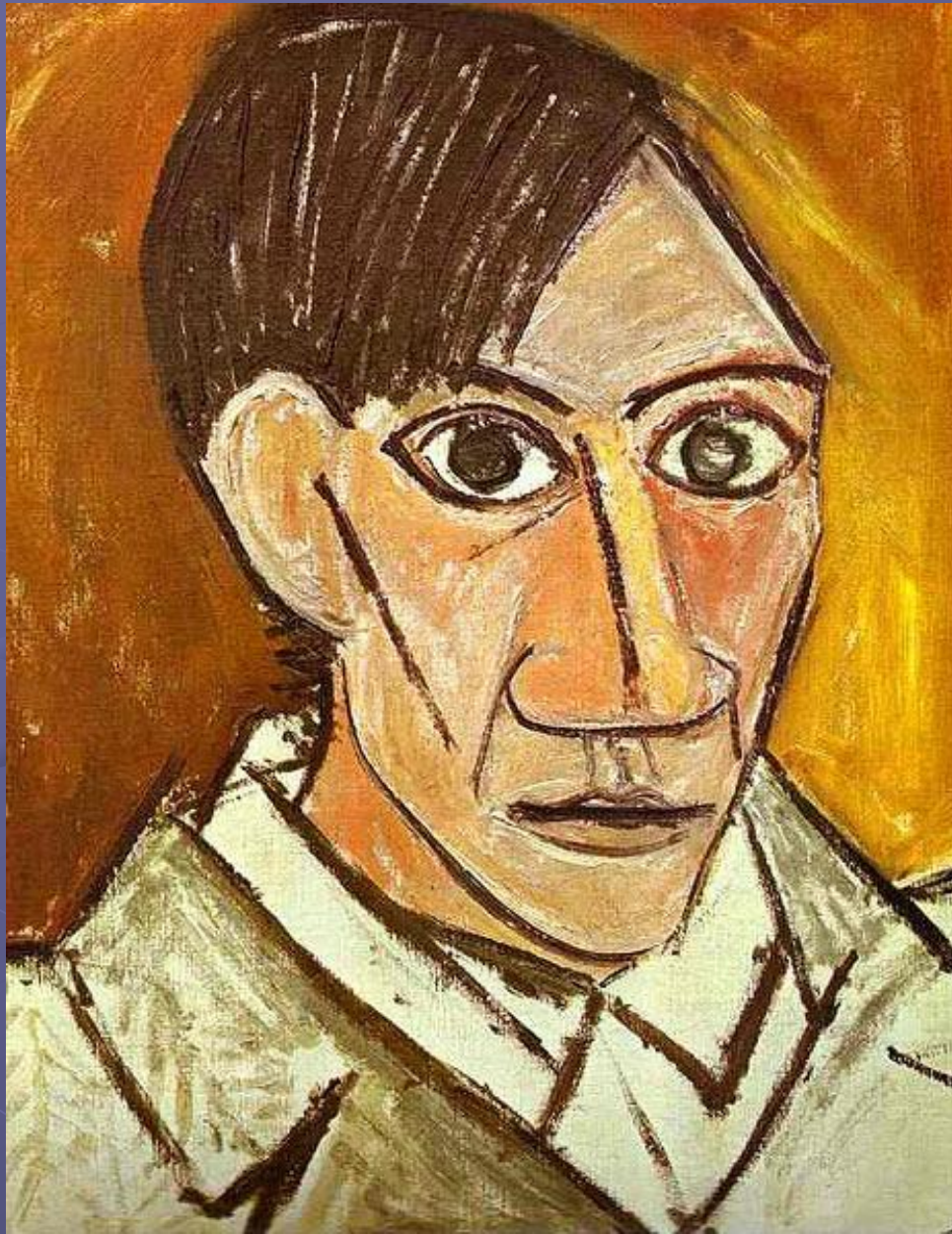


This is a self portrait painted by Pablo Picasso.

Picasso was inspired by many things. What do you think inspired Picasso to paint this self portrait?



Picasso was inspired by African masks.





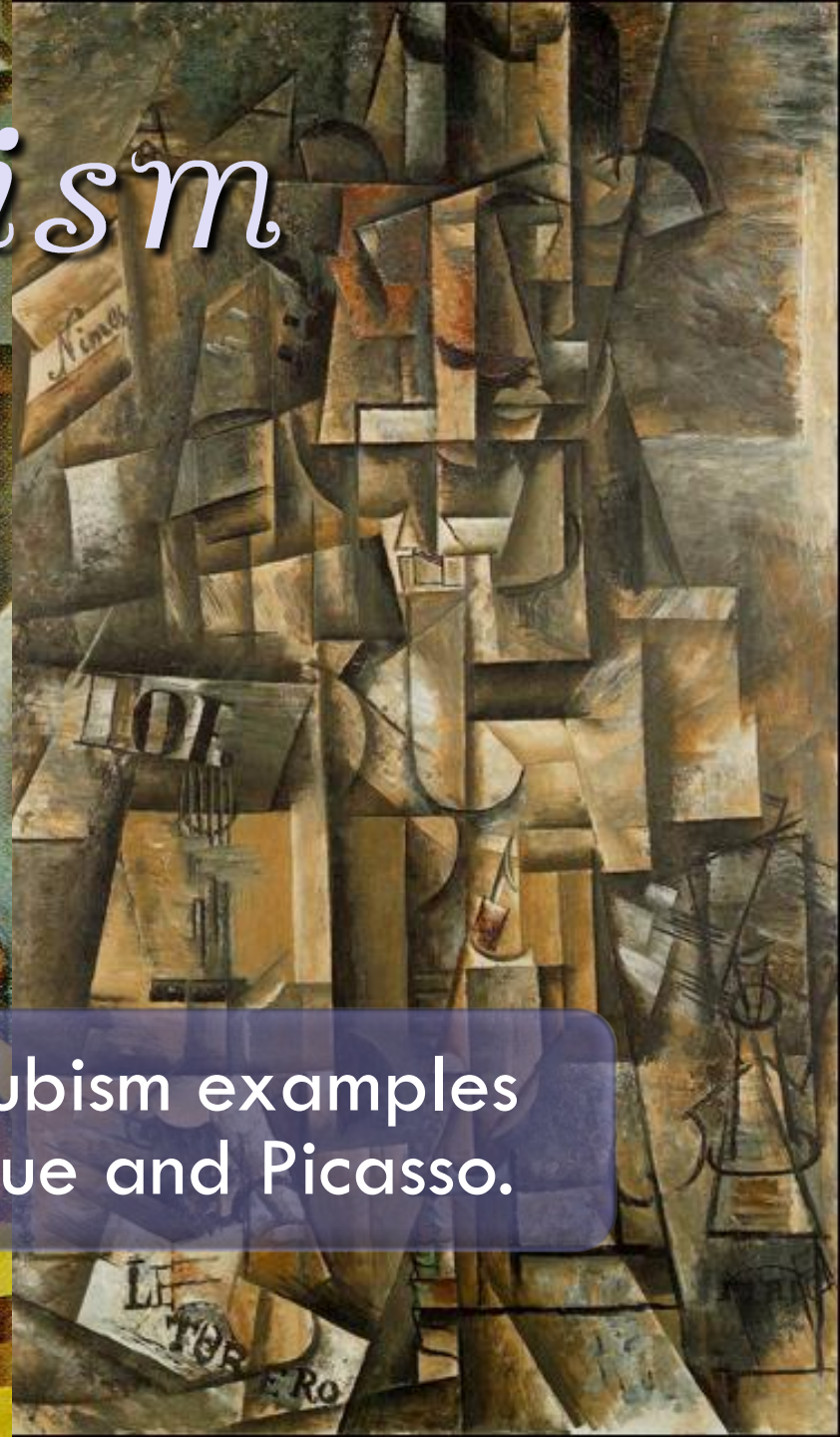
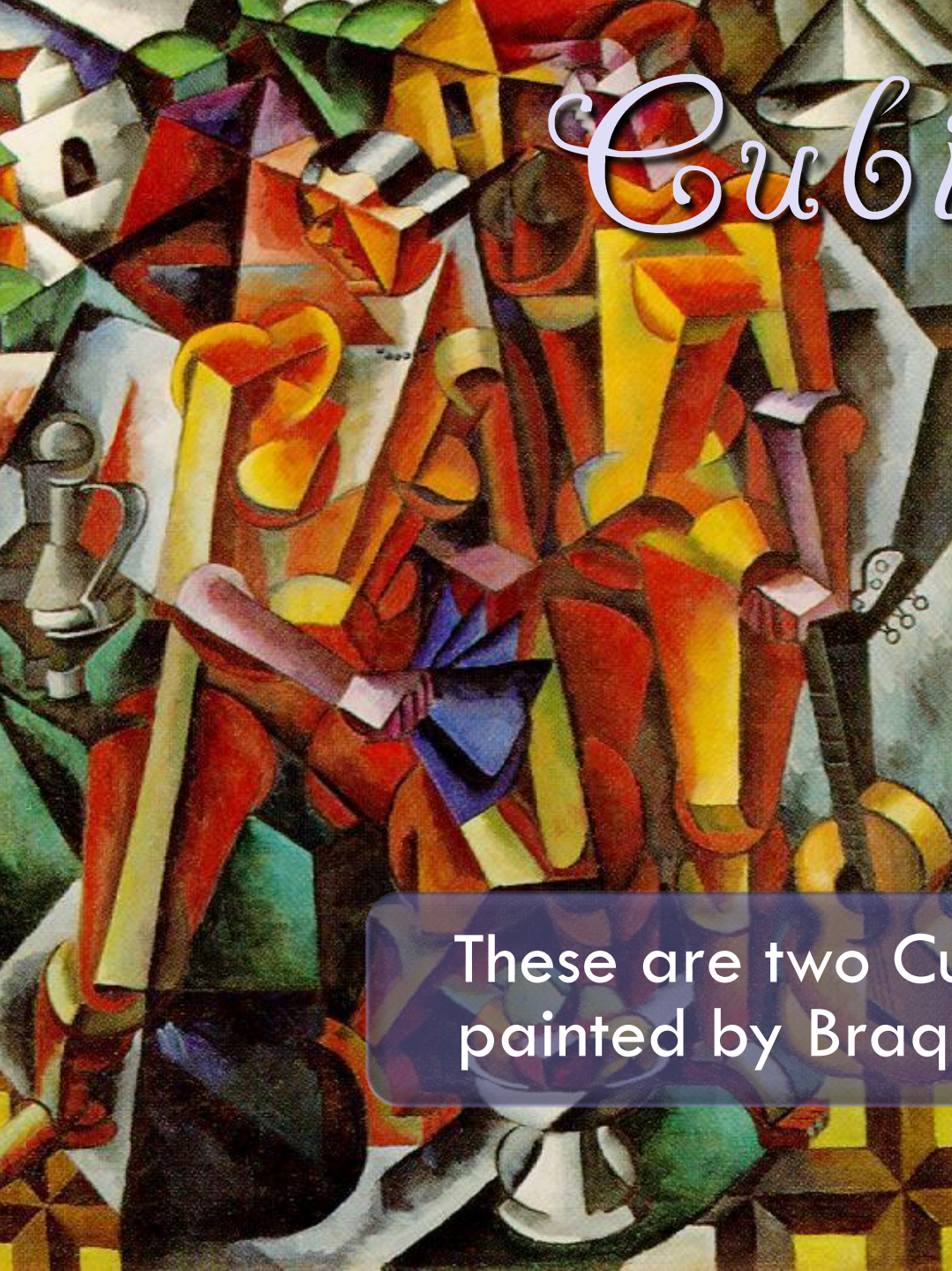
# *Cubism*

A black and white photograph of Pablo Picasso, an elderly man with a serious expression, wearing a dark suit, a light-colored shirt, a patterned tie, and a fedora-style hat. He is looking slightly to the left of the camera. The background is out of focus, showing what appears to be a stone wall or building.

# Cubism

Picasso worked with artist –  
Georges Braque and together,  
they Co-Invented Cubism.

# Cubism



These are two Cubism examples painted by Braque and Picasso.



# *The Blue Period*





*The Tragedy, 1903*

# *The Girl with a Ponytail*

# The Girl with a Ponytail

In 1954, Pablo met Sylvette David, a young girl in the town he was living.

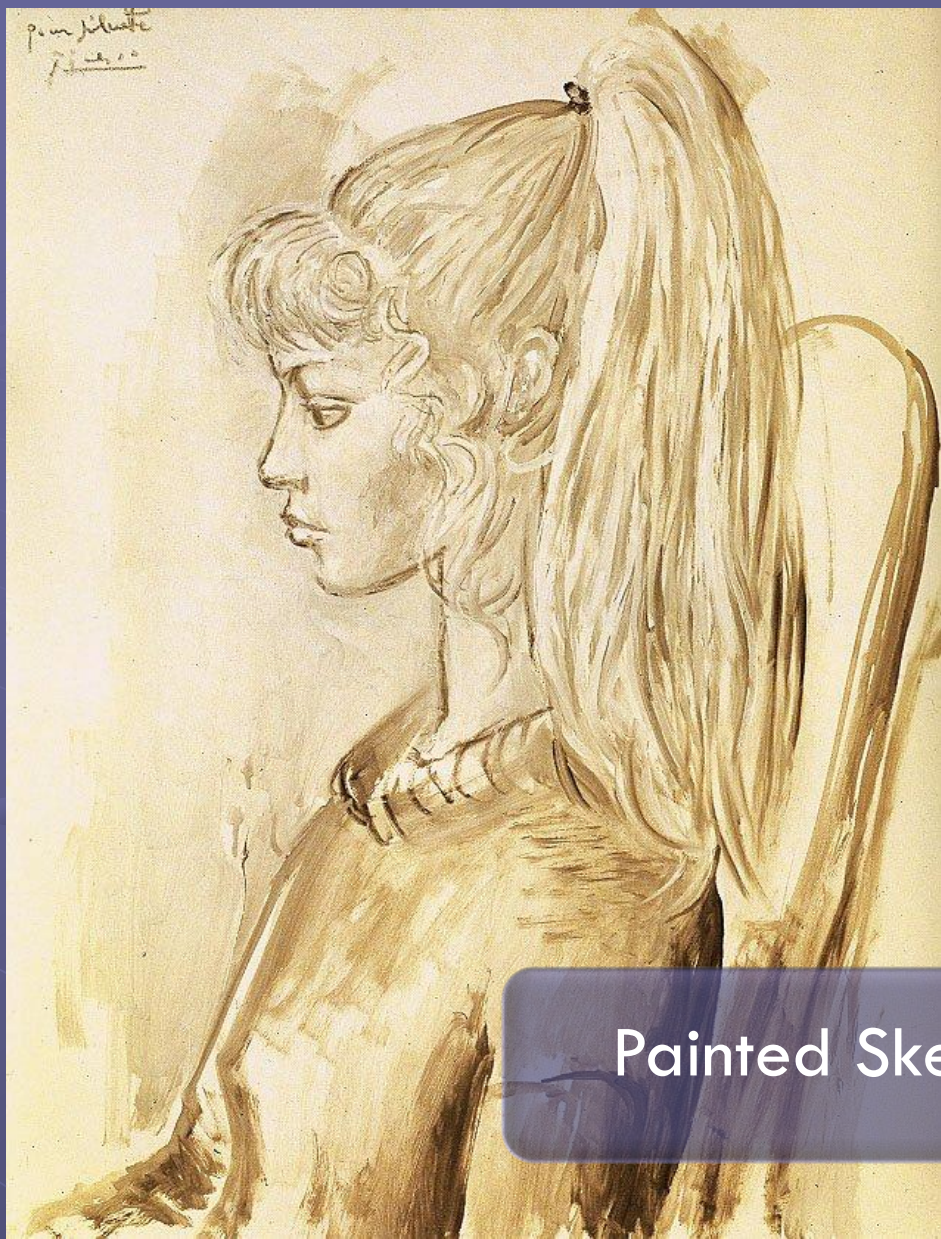
Picasso asked Sylvette if he could paint images of her.

He painted over 40 images of Sylvette, The Girl with a Ponytail.

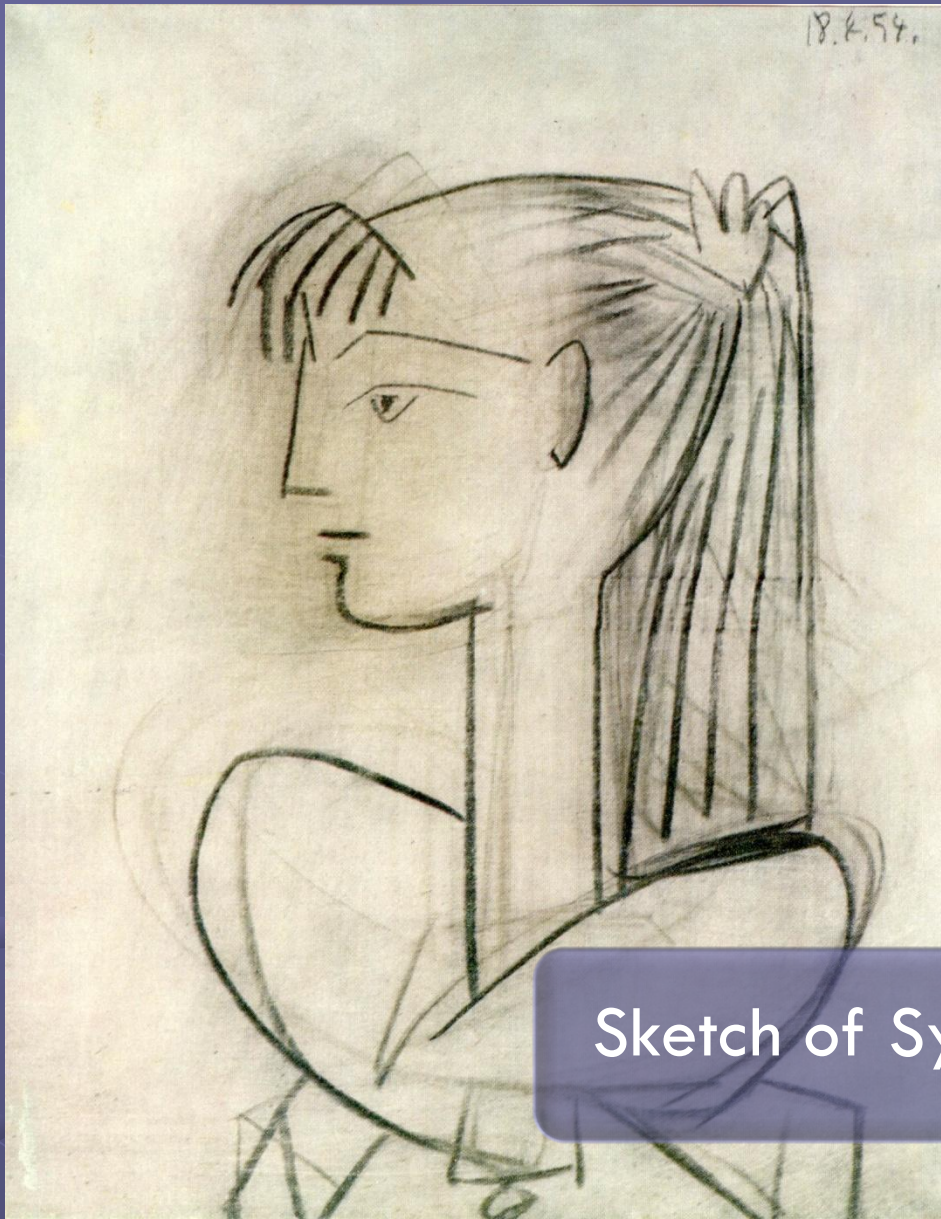
One year after painting these images of Sylvette, Picasso had a big exhibit.

These images became an international icon.

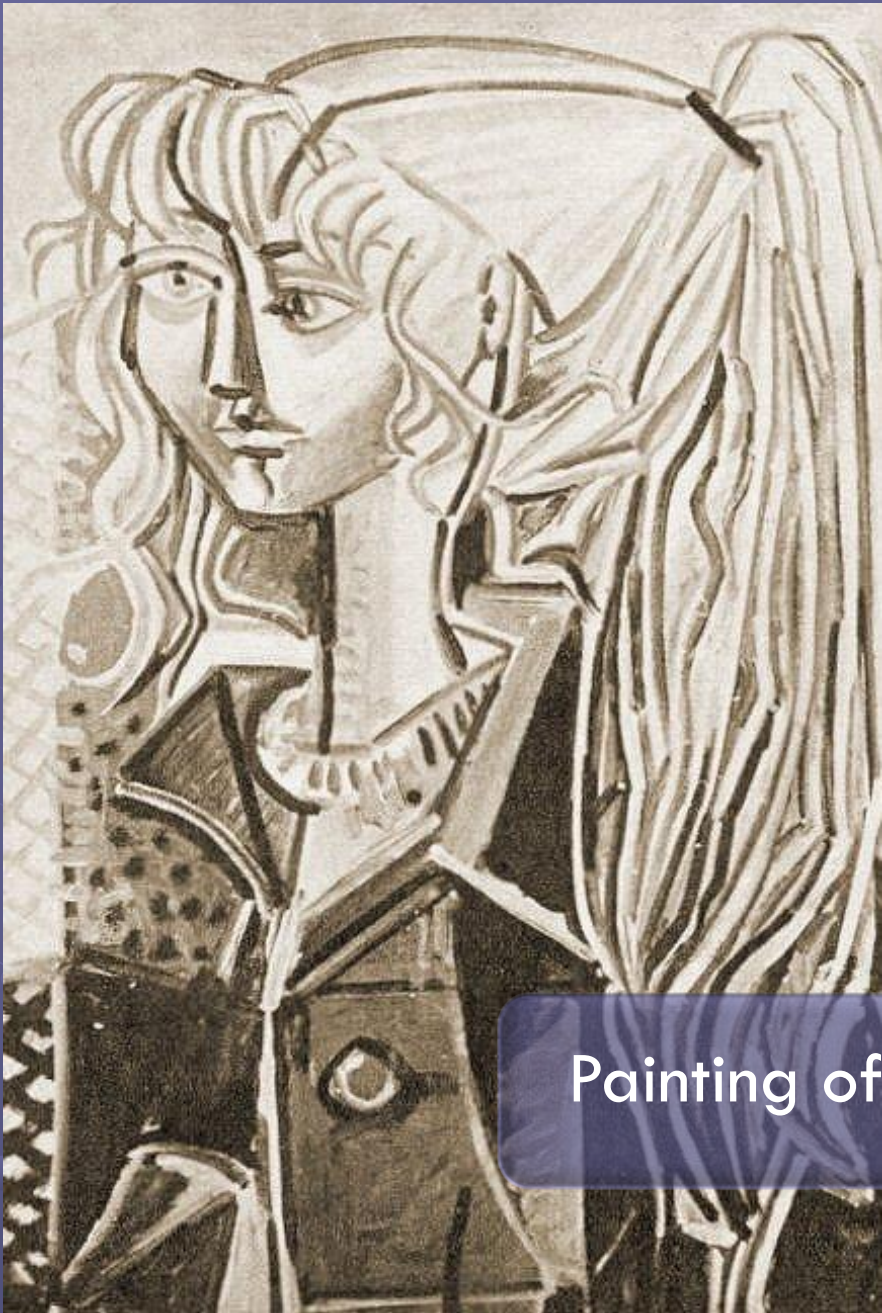




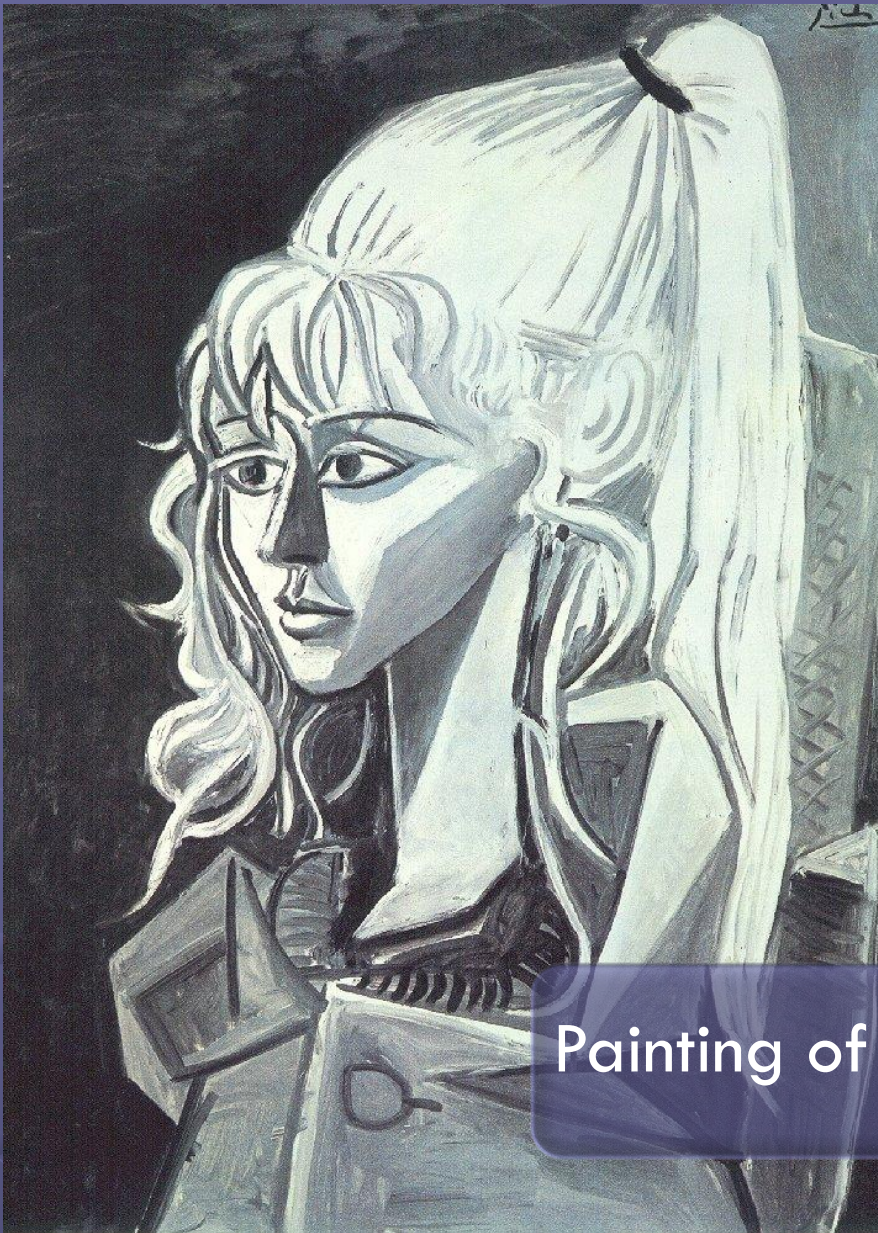
Painted Sketch by Pablo Picasso.



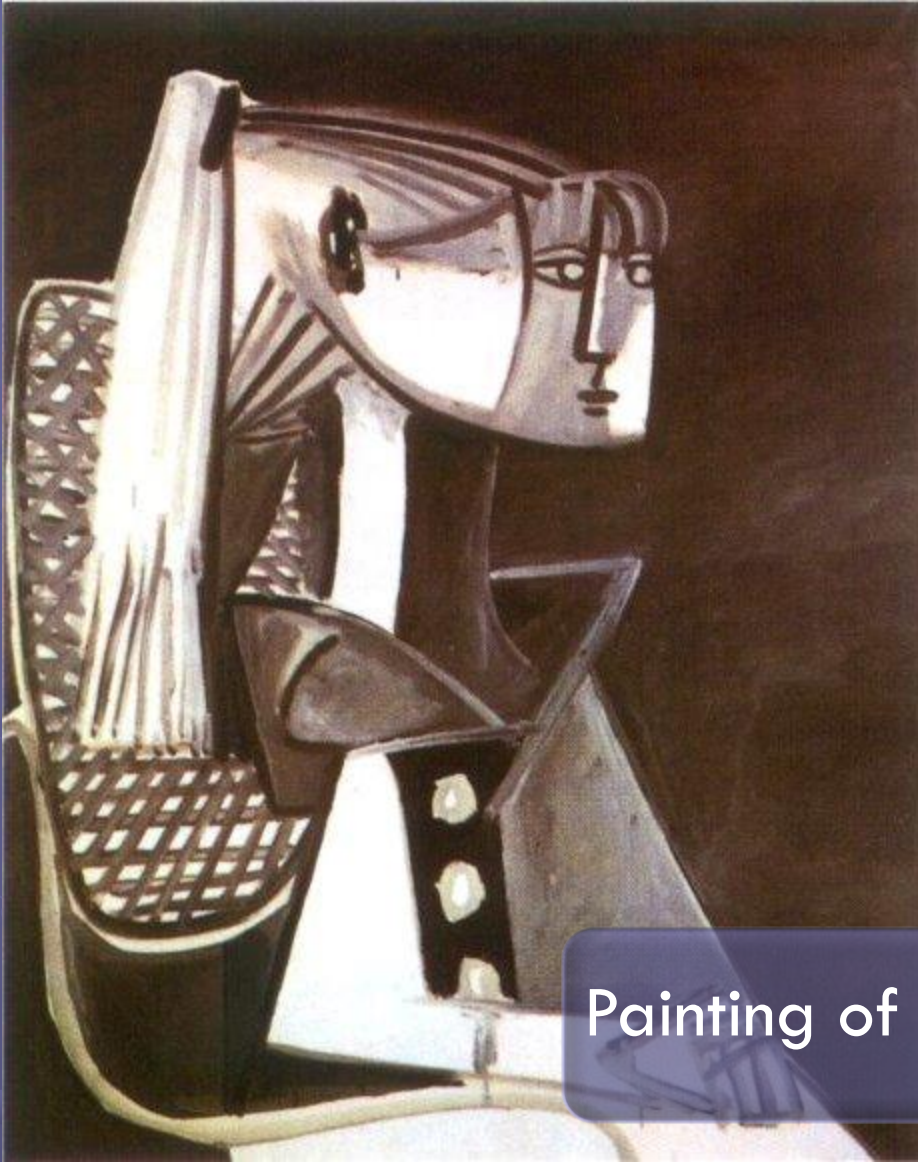
Sketch of Sylvette by Pablo Picasso.



Painting of Sylvette by Pablo Picasso.



Painting of Sylvette by Pablo Picasso.



Painting of Sylvette by Pablo Picasso.





Painting of Sylvette by Pablo Picasso.

# Characteristics of Picasso Paintings

Thick black outlines.

Geometric Shapes

Color Scheme

Texture – Hair Strands.

Texture – Brush Strokes

Values – Lights and Darks of Colors.

Simplification of details.

Distortions





# *Student Work*

